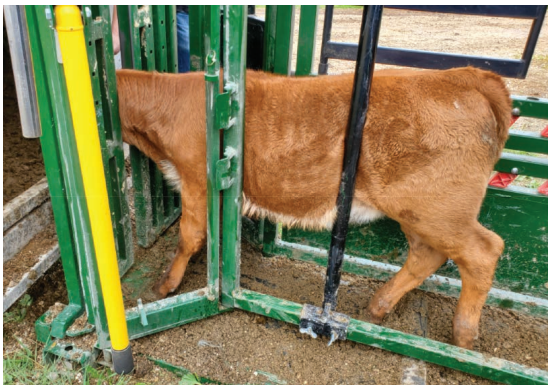


HANDLING CALVES WITH THE TRIMMING BAR

When added to our chutes, the trimming bar makes handling calves much easier. It allows calves to be handled in a natural position, rather than tipping the animal over. When used with the squeeze, the trimming bar immobilizes the calf. This allows you to completely open the side access door, giving you full access to the side of the calf. The trimming bar is adjustable and allows for any size of animal, as shown below with pictures of calves that are under 3 months old.



SHOULDER, RIB AND HIP ACCESS



PLACEMENT OF TRIMMING BAR SERVES AS ANTI-KICK BAR



CLOSE-UP OF RIB AND HIP AREA



CLOSE-UP SIDE VIEW OF SHOULDER ACCESS



CLOSE-UP TOP VIEW OF SHOULDER ACCESS

FURTHER ASSISTANCE

If you require further information or technical assistance, contact Arrowquip Client Care at 1-866-383-7827 or cs@arrowquip.com.

1-866-383-7827 | CS@ARROWQUIP.COM



ARROWQUIP